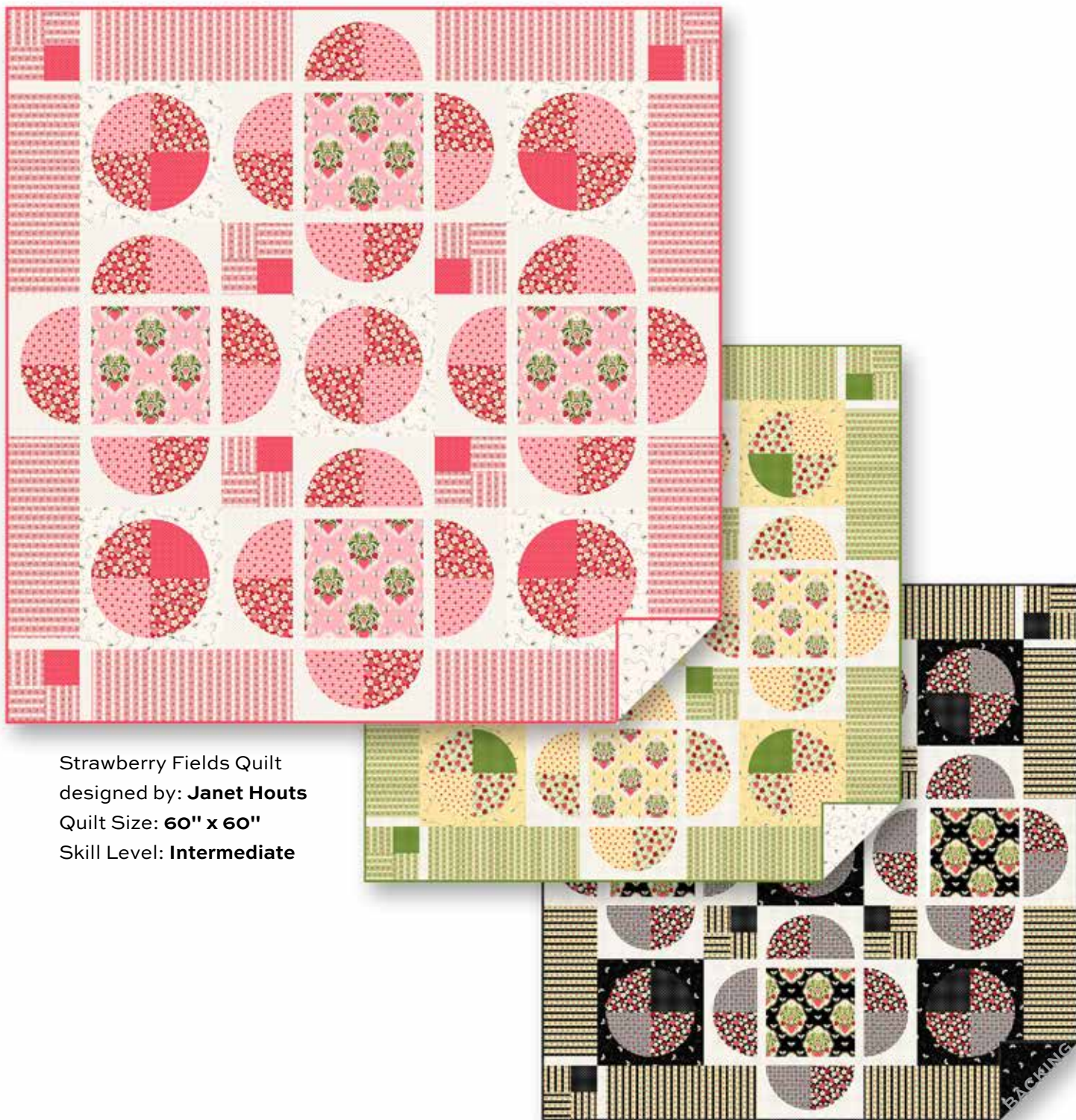


Strawberry Honey

ANDOVER FABRICS



Strawberry Fields Quilt
designed by: **Janet Houts**
Quilt Size: **60" x 60"**
Skill Level: **Intermediate**

Strawberry Fields Quilt

Introducing Andover Fabrics new collection: **STRAWBERRY HONEY** by Andover Fabrics

Quilt designed by Janet Houts

Quilt finishes 60" x 60"

Strawberry fields forever. Quarter circles set in a maze of stripes will delight anyone in love with summer's favorite fruit. For a more dramatic look, make it in green and yellow or black with touches of pink. The large patches are a good place to learn how to piece curves.

Cutting Directions

Note: Read assembly directions before cutting patches. All measurements are cut sizes and include ¼" seam allowances. WOF designates the width of fabric from selvedge to selvedge (approximately 42" wide).

Fabric A

Fussy-cut (4) squares 10½", centering strawberry motif as shown

Fabric B

Cut (26) T1

Fabric C

Cut (22) T1

Fabric D

Cut (20) T2

Fabric E

Cut (8) rectangles 6½" x 17½"

Cut (24) squares 3½"

Fabric F

Cut (4) T1

Cut (8) squares 3½"

Fabric G

Cut (32) T2

Cut (8) strips 1½" x 12½"

Cut (8) strips 1½" x 10½"

Cut (8) strips 1½" x 6½"

Binding

Cut (7) strips 2½" x WOF for binding

Backing

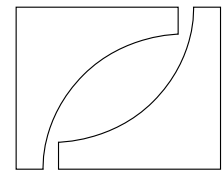
Cut (2) lengths 36" x 70", pieced to fit quilt top with overlap on all sides

Fabric Requirements

		Yardage	Red	Green	Black
Fabric A	blocks	¾ yard	1154-E	1154-Y	1154-K
Fabric B	corners	¾ yard	1155-R	1155-G	1155-K
Fabric C	border	¾ yard	1156-E	1156-Y	1156-K
Fabric D	border	¾ yard	1157-L	1157-Y	1157-K
Fabric E	blocks	1 yard	1158-E	1158-G	1158-K
Fabric F	blocks	¼ yard	1159-E	1159-G	1159-K
Fabric G	set	1¼ yards	1159-L	1159-L	1159-L
Binding		⅝ yard	1159-E	1159-G	1159-K
Backing		4 yards	1157-L	1157-Y	1157-K

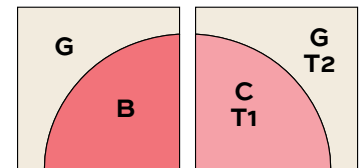
Making the Quilt

1. Make an acrylic or cardboard template of T1 and T2. Mark the dots on the templates and poke a small hole at each dot. Refer to the Cutting T2 diagram to nestle patches to conserve fabric. Cut T1 and T2 patches from the appropriate fabrics. Mark the dots on the wrong side of fabric patches.



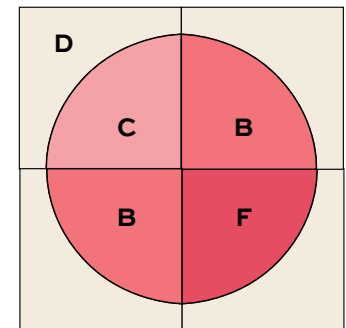
Cutting T2

2. With right sides together, position a Fabric G T2 patch on top of a Fabric B T1 patch. Align and pin the dots and several places along the curve, easing the curved edges together. Sew in a scant ¼" seam. Press the seam allowance toward the T2 patch. Repeat these steps to make 16 squares with B and G patches and 16 with C and G patches. Join a B/G and a C/G square together to make Unit 1. It should measure 6½" x 12½". If it does not, adjust your stitching and pressing techniques. Make a total of 16 Unit 1.



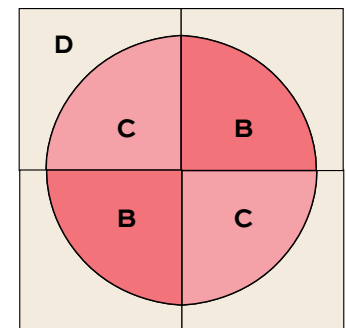
Unit 1 – Make 16

3. Repeat Step 2 to make the 4 units needed for each Block 1. Join the units to make a square, orienting the fabrics in the order shown. The block should measure 12½". Make 4 Block 1.



Block 1 – Make 4

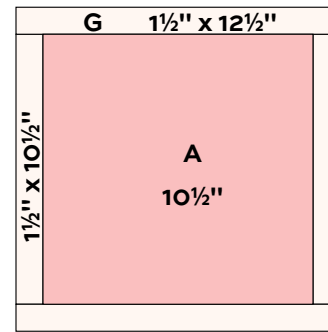
4. Likewise, join 4 units to make 1 Block 2.



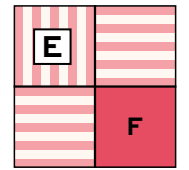
Block 2 – Make 1

Strawberry Fields Quilt

- For Block 3, sew the Fabric G strips to the Fabric A $10\frac{1}{2}$ " square. The block should measure $12\frac{1}{2}$ ". Make 4 Block 3.
- Refer to the Unit 2 diagram. Join 1 Fabric F and 3 Fabric E patches to make a square, orienting the stripes as shown. It should measure $6\frac{1}{2}$ " square. Make 8 Unit 2.
- On a large flat surface, arrange the units and blocks into 5 horizontal rows that each have 5 blocks/units. Stand back to be certain that the fabrics are oriented as shown to make the overall design. Once you are satisfied, join the parts into rows, and then join the rows.
- Arrange and join Fabric E rectangles, Unit 1s, and Fabric G $6\frac{1}{2}$ " strips to make the 4 borders. Sew borders to the sides of the quilt. Add a Unit 2 to the ends of the top and bottom borders and sew to the quilt.



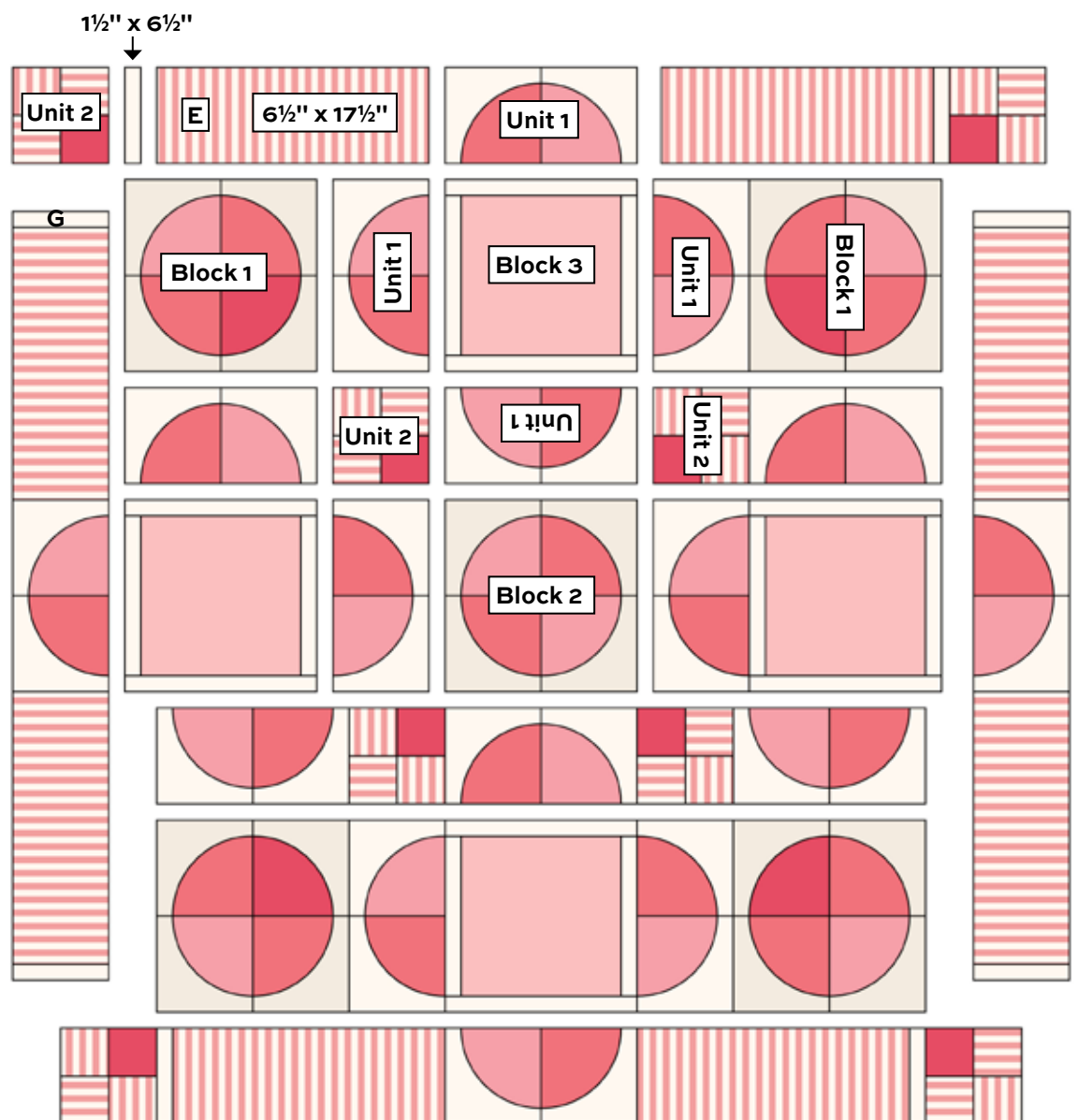
Block 3 – Make 4



Unit 2 – Make 8

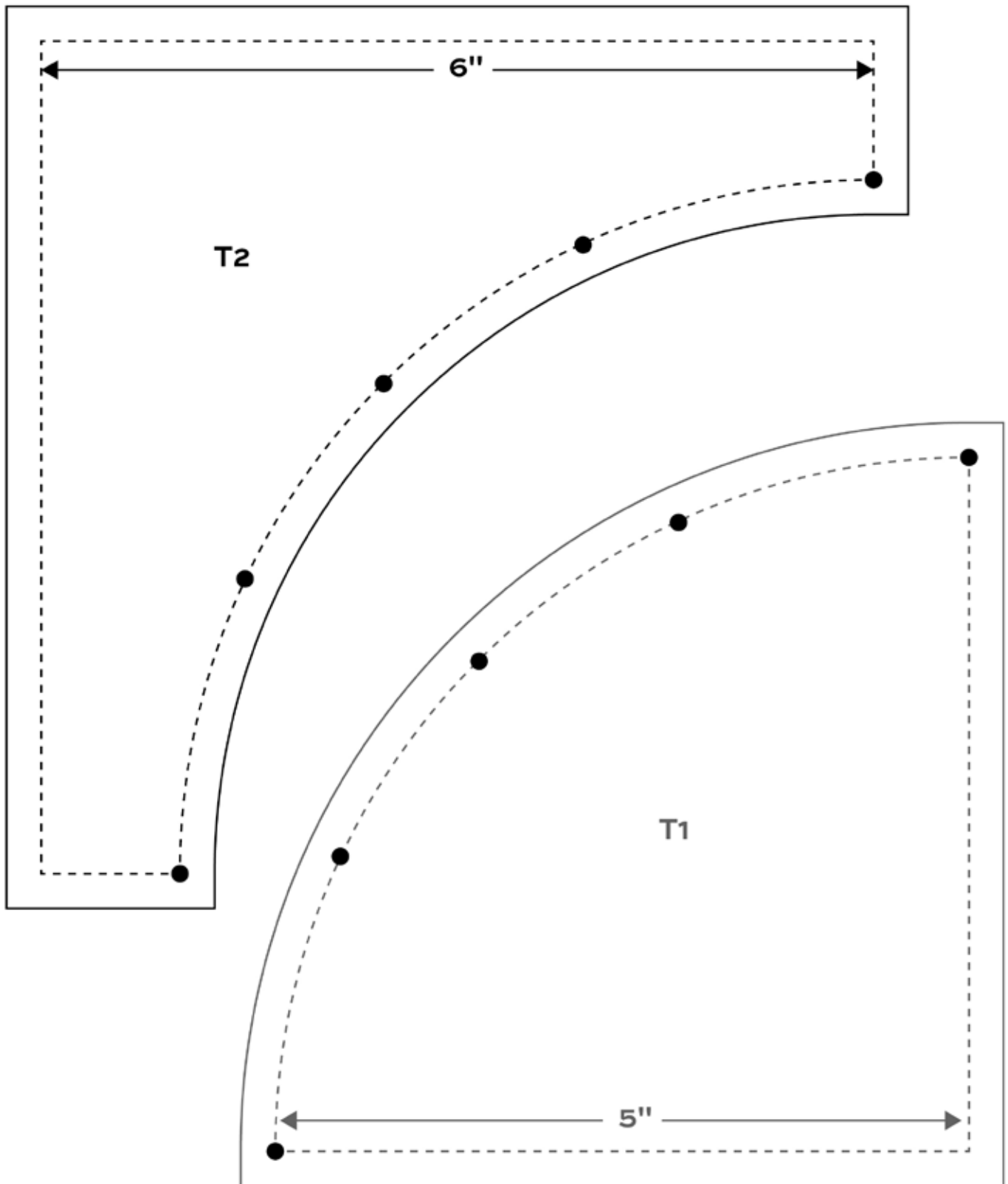
Finishing the Quilt

- Layer the quilt with batting and backing and baste. Quilt in the ditch around patches. Quilt around the printed motifs in the Block 3 centers. Bind to finish the quilt.



Quilt Assembly

Strawberry Fields Quilt



Strawberry Honey ANDOVER FABRICS



1154-E*



1155-G



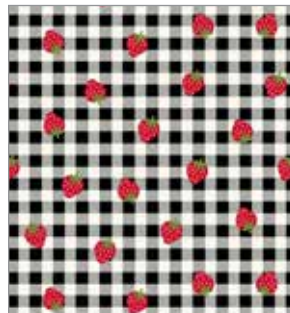
1155-K



1155-R*



1156-E*



1156-K



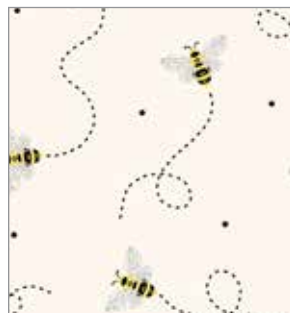
1156-Y



1154-K



1157-K



1157-L*



1157-Y



1154-Y



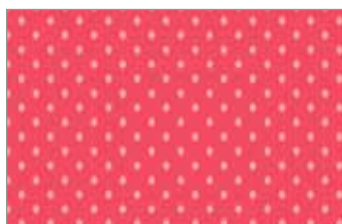
1158-E*



1158-G



1158-K



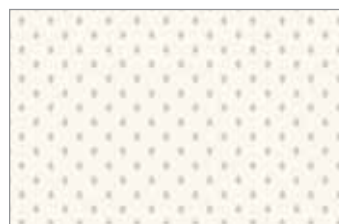
1159-E*



1159-G



1159-K



1159-L*

*Indicates fabrics used in featured quilt pattern.
Fabrics shown are 50% of actual size.